

# FD-RX

Fully Automatic Safe Deposit System



# SAFE DEPOSIT BOX

## SAFE DEPOSIT BOX

A range of sizes. Select the size according to the items to be stored.

### ■ FD-RX features

- Seven sizes of deposit box (height 60mm - 240mm) can be combined for your vault.
- A weight sensor to prevent over loading is installed as standard equipment. (Load capacity: 20kg)
- After delivery, boxes of differing heights can be switched in & out, enabling efficient system operation.

## FD-RX

Depth : **450mm**

Large size box with extra capacity



### ■ Box heights (FD-RX)

Choose from **7** sizes

※ Capacity includes the key section

Height : **60mm**

450D Capacity / 6,555cm<sup>3</sup>

Height : **90mm**

450D Capacity / 9,979cm<sup>3</sup>

Height : **120mm**

450D Capacity / 13,422cm<sup>3</sup>

Height : **150mm**

450D Capacity / 16,864cm<sup>3</sup>

Height : **180mm**

450D Capacity / 20,307cm<sup>3</sup>

Height : **210mm**

450D Capacity / 23,749cm<sup>3</sup>

Height : **240mm**

450D Capacity / 27,191cm<sup>3</sup>

# SAFE DEPOSIT VAULT

Vault installation space reduced compared to previous models.

## Industry-leading storage efficiency! Compact installation space and flexible system change-up

Choose from 3 safe deposit vault heights

S-type **2,538mm**

28 rows per stack  
(loading 60mm boxes)



H-type **3,000mm**

34 rows per stack  
(loading 60mm boxes)

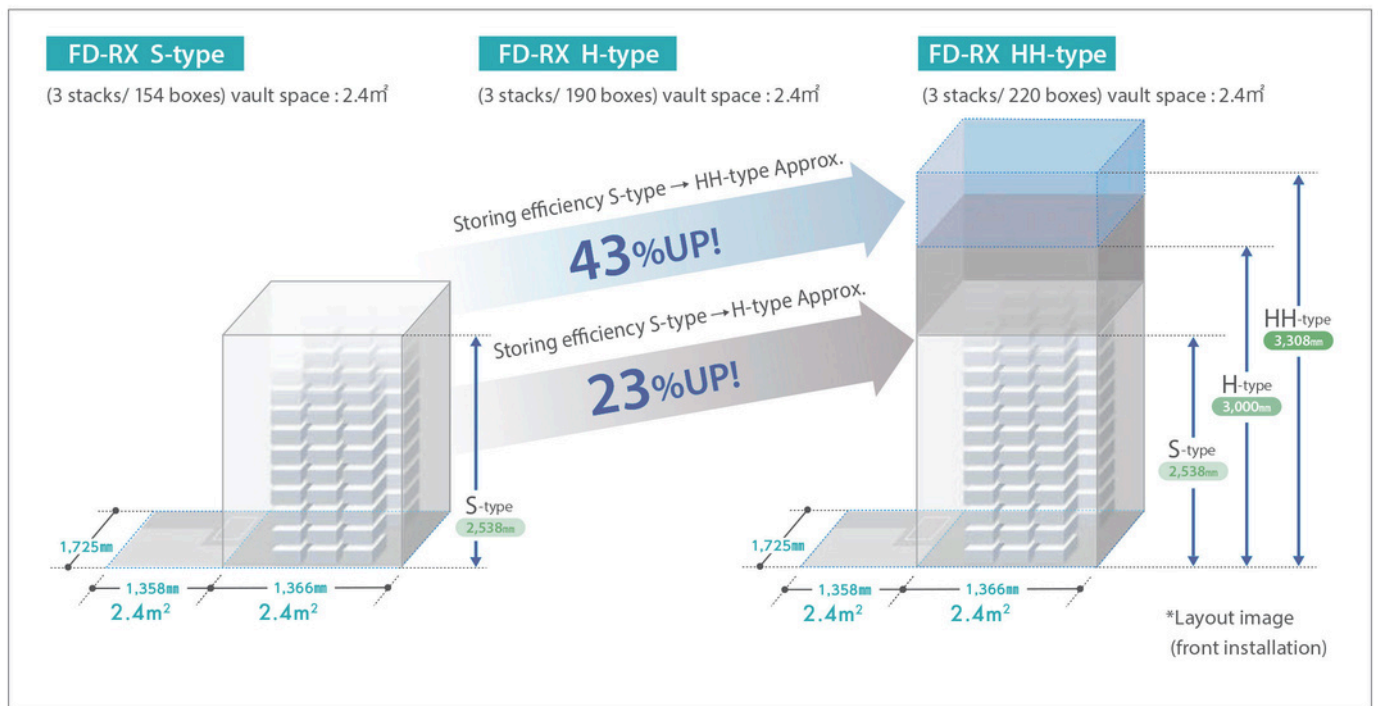


HH-type **3,308mm**

39 rows per stack  
(loading 60mm boxes)



Utilizing the vertical direction allows for the storage of more boxes using the same floorspace.



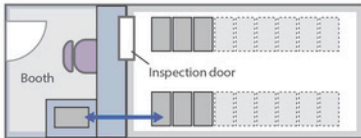
# SPACE LAYOUT

## Select a system according to your space and layout requirements.

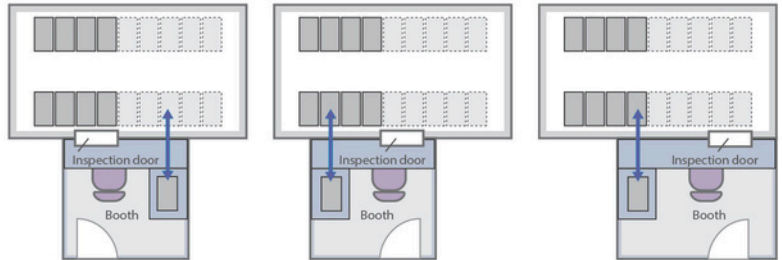
Single booth

### Layout variations

#### Front installation



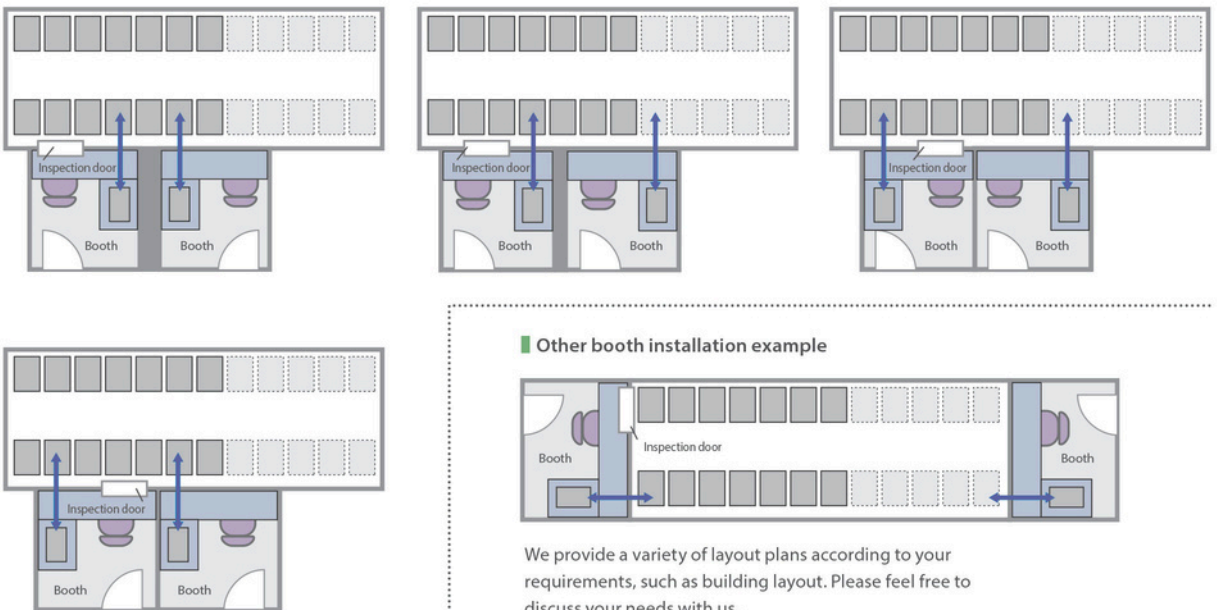
#### Side installation



Multiple booths

### Select a layout considering future expansion

#### Side installation

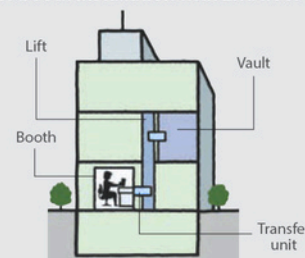


We provide a variety of layout plans according to your requirements, such as building layout. Please feel free to discuss your needs with us.

### Multiple floor installation satisfies diversified installation requirements

When there is not enough installation space on one floor, it is possible to install the booth on that floor and the vault on the upper floor. Installing the vault on the upper floor is also effective in preventing flood damage.

#### 1st floor booth installation with 2nd floor vault

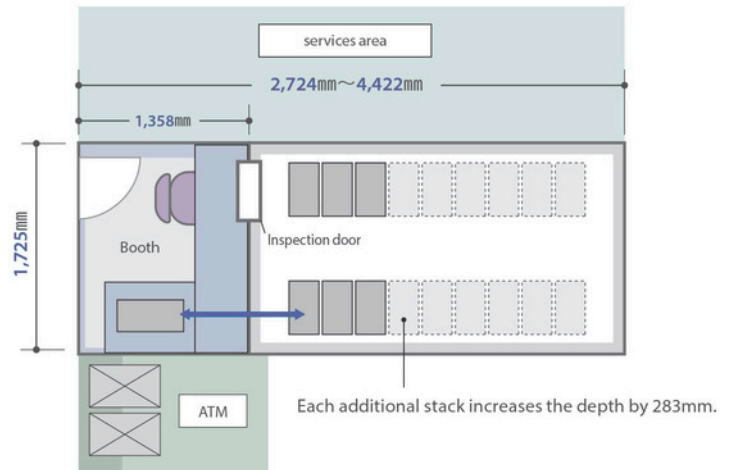


## Vault layout example

FD-RXS13 (S-type: single booth with 3 stacks)

### Suitable for small site

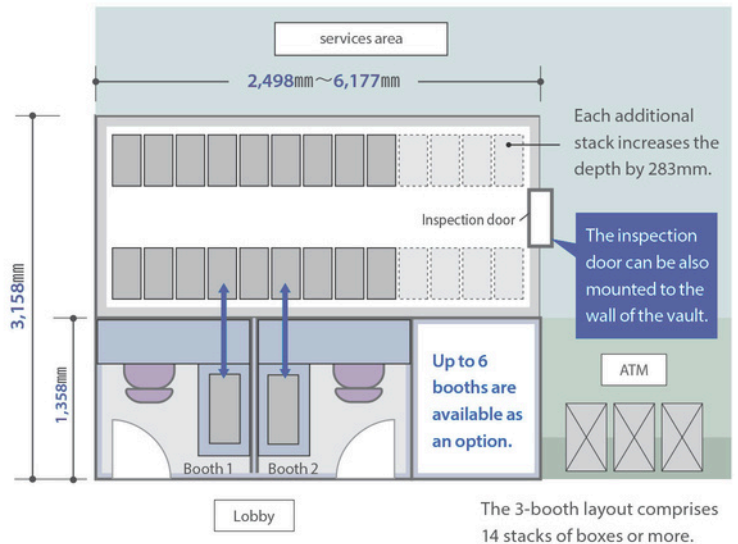
Pattern	Height 60mm box	Height 120mm box	Height 180mm box	Ratio	Total boxes
1	154	0	0	100 : 0 : 0	154
2	76	24	12	68 : 21 : 11	112
3	46	30	18	49 : 32 : 19	94



FD-RXHH29 (HH-type: 2 booths with 9 stacks)

### Layout for large site

Pattern	Height 60mm box	Height 120mm box	Height 180mm box	Ratio	Total boxes
1	676	0	0	100 : 0 : 0	676
2	352	90	54	71 : 18 : 11	496
3	190	126	90	47 : 31 : 22	406



Combinations other than the above are possible.

## Earthquake resistant

### Strong enough to withstand seismic intensity 6+.

When the system detects seismic intensity 5 or more, the transfer unit stops automatically and instructions are displayed on the touch panel screen informing users to leave the booth.

Check the instructions on the display.

An earthquake occurred.  
Please leave the booth  
immediately.



## Anti-burglary and fire resistance

### Security wall consisting of Anti-burglary and fire-resistant panels

The vault consists of security walls: fire-resistant for two hours and Anti-burglary for 60 min (2PH/ TRTLV-60), and excellent earthquake resistance.

### Inspection door

The vault is equipped with an inspection door for maintenance, consisting of three dial locks (safe lock) with 100 million variations for high security.

\*Standards set by the Federation of Japan Safe & Furniture Cooperatives are used for fire resistance and Anti-burglary performance marking.



## Power failure

### When a power failure occurs, the system guides booth users to leave the booth.

When a power failure occurs during use of the system, deposit boxes are returned to the vault. The system will be restored after power failure. No recovery operations are required.

Check the instructions on the display.

A power failure occurred.  
Please leave the booth  
immediately.

## Flooding resistance

Customers' property is protected from flood damage.

Option

Choose from four specifications according to your regional hazard map and vault installation environment.

### Flooding resistance specifications

- (1) 1m-high flooding
- (2) 2m-high flooding
- (3) Low-level flooding (300mm)
- (4) Waterproof case (for A4-sized documents)

### Flooding resistance standard (1) ~ (3)

Prevents flooding into the safe deposit box room below the height of the safe deposit box installed at the bottom of the rack.

※ We have guaranteed performance via testing in a 2m-deep water pool for 24 hours.

### Waterproof performance (4)

JIS IPX8 (former JIS waterproof protection class 8)



Flooding test

# SYSTEM MANAGEMENT SOFTWARE

System operation is managed by a computer.  
Easy operation through instructions on the screen.

## System Management Software

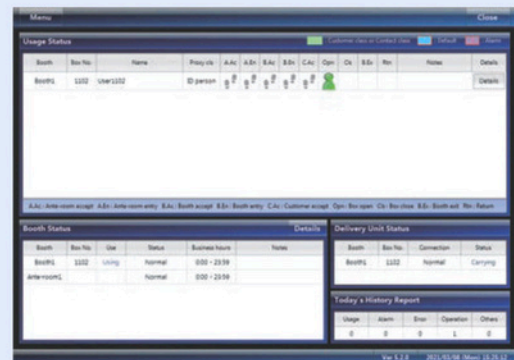
The fully automatic vault is controlled by a PC.  
Vault management information can be output using a printer attached to the system.

### ● Main Functions

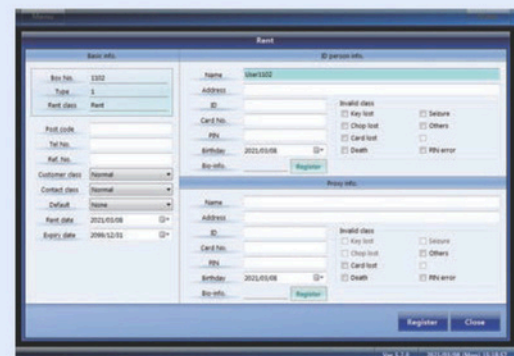
- Constant monitoring of vault usage
- Management of vault users (contracts/ reservations/ changes/ cancellations)
- Daily reporting

### ● Other Functions

- Log data inspection
- Vault registration confirmation
- Disaster notification (earthquake, fire, power failure, etc.)



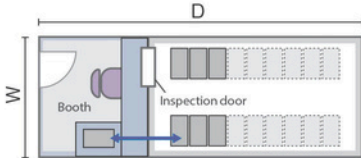
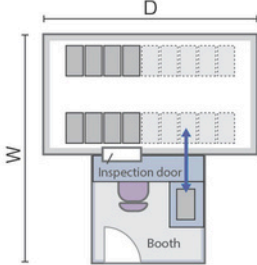
Monitoring screen



Rent screen

# SPECIFICATIONS

## ■ FD-RX

		■ Front installation (single booth)							■ Side installation (single booth)						
															
		3stacks	4stacks	5stacks	6stacks	7stacks	8stacks	9stacks	3stacks	4stacks	5stacks	6stacks	7stacks	8stacks	9stacks
Number of boxes	S-type	154	210	266	322	378	434	490	160	204	260	316	372	428	484
	H-type	190	258	326	394	462	530	598	196	252	320	388	456	524	592
	HH-type	220	298	376	454	532	610	688	226	292	370	448	526	604	682
System outer dimensions (mm)	W	1,725							3,158 (1,800)						
	H	S-type=2,538, H-type=3,000, HH-type=3,308							S-type=2,538, H-type=3,000, HH-type=3,308						
	D	2,724 (1,366)	3,007 (1,649)	3,290 (1,932)	3,573 (2,215)	3,856 (2,498)	4,139 (2,781)	4,422 (3,064)	1,366	1,649	1,932	2,215	2,498	2,781	3,064
Total floor area (m <sup>2</sup> )		4.8	5.3	5.8	6.3	6.8	7.2	7.7	4.6	5.1	5.6	6.1	6.6	7.2	7.7
Vault area (m <sup>2</sup> )		2.4	2.9	3.4	3.9	4.4	4.8	5.3	2.5	3.0	3.5	4.0	4.5	5.1	5.6
Booth area (m <sup>2</sup> )		2.4	2.4	2.4	2.4	2.4	2.4	2.4	2.1	2.1	2.1	2.1	2.1	2.1	2.1
System weight (kg)	S-type	4,700	5,235	5,770	6,305	6,840	7,375	7,910	4,750	5,285	5,820	6,355	6,890	7,425	7,960
	H-type	5,400	6,020	6,640	7,260	7,880	8,500	9,120	5,450	6,070	6,690	7,310	7,930	8,550	9,170
	HH-type	5,900	6,590	7,280	7,970	8,660	9,350	10,040	5,950	6,640	7,330	8,020	8,710	9,400	10,090
Floor load (kg/m <sup>2</sup> )	S-type	2,600	2,530	2,480	2,450	2,420	2,450	2,420	2,540	2,450	2,410	2,380	2,360	2,300	2,290
	H-type	3,050	2,970	2,920	2,880	2,850	2,880	2,850	2,970	2,870	2,830	2,800	2,780	2,710	2,700
	HH-type	3,380	3,300	3,250	3,210	3,180	3,220	3,200	3,290	3,190	3,160	3,130	3,110	3,030	3,020
Box storage capacity		20 kg/ box													
Number of booths		Single booth													
Power supply		Vault: 100V AC with ground (10A) PC: 100V AC with ground (15A)													

**Side installation (2 booths)**

		7stacks	8stacks	9stacks	10stacks	11stacks	12stacks	13stacks	14stacks	15stacks	16stacks	17stacks	18stacks	19stacks	20stacks	
Number of boxes	S-type	366	422	478	534	590	646	702	758	814	870	926	982	1,038	1,094	
	H-type	450	518	586	654	722	790	858	926	994	1,062	1,130	1,198	1,266	1,334	
	HH-type	520	598	676	754	832	910	988	1,066	1,144	1,222	1,300	1,378	1,456	1,534	
System outer dimensions (mm)	W	3,158 (1,800)														
	H	S-type=2,538, H-type=3,000, HH-type=3,308														
	D	2,498	2,781	3,064	3,347	3,630	3,913	4,196	4,479	4,762	5,045	5,328	5,611	5,894	6,177	
Total floor area (m <sup>2</sup> )		8.6	9.2	9.7	10.2	10.7	11.2	11.7	12.2	12.7	13.2	13.7	14.2	14.8	15.3	
Vault area (m <sup>2</sup> )		4.5	5.1	5.6	6.1	6.6	7.1	7.6	8.1	8.6	9.1	9.6	10.1	10.7	11.2	
Booth area (m <sup>2</sup> )		4.1	4.1	4.1	4.1	4.1	4.1	4.1	4.1	4.1	4.1	4.1	4.1	4.1	4.1	
System weight (kg)	S-type	7,100	7,635	8,170	8,705	9,240	9,775	10,310	10,845	11,380	11,915	12,450	12,985	13,520	14,055	
	H-type	8,140	8,760	9,380	10,000	10,620	11,240	11,860	12,480	13,100	13,720	14,340	14,960	15,580	16,200	
	HH-type	8,950	9,640	10,330	11,020	11,710	12,400	13,090	13,780	14,470	15,160	15,850	16,540	17,230	17,920	
Floor load (kg/m <sup>2</sup> )	S-type	2,400	2,330	2,320	2,310	2,300	2,290	2,290	2,280	2,270	2,270	2,270	2,260	2,240	2,240	
	H-type	2,810	2,740	2,730	2,720	2,710	2,700	2,690	2,690	2,680	2,680	2,680	2,670	2,640	2,640	
	HH-type	3,150	3,070	3,060	3,050	3,040	3,030	3,030	3,020	3,020	3,010	3,010	3,010	2,980	2,970	
Box storage capacity		20 kg/ box														
Number of booths		2 booths (Option: 3-6 booths)														
Power supply		Vault: 100V AC with ground (10A) PC: 100V AC with ground (15A)														

\*1. The number of boxes is the maximum installable quantity of 60mm height boxes, excluding maintenance boxes. The inspection door is located inside the booth (except for side installations (one booth) with 3 stacks).

\*2. The system outer dimensions include the booth dimension of 1,358 mm. ( ) indicates the dimension of the vault.

\*3. The total floor area does not include the front room.

\*4. The floor load is a standard value based on a load per box of 10 kg and a storage rate of 100%. It does not include the weight of the chair and partitions. The floor load is calculated based on the floor area of the vault.

\*5. Box storage capacity includes the box body weight.

\*6. More than 20 stacks is able to be provided. In this case, the Vault width is 1,875mm.